



GMT MONTHLY MEMBERSHIP PROGRESS REPORT

Results as of: 5/31/2024

Multiple District 6

LOCATION: COLORADO

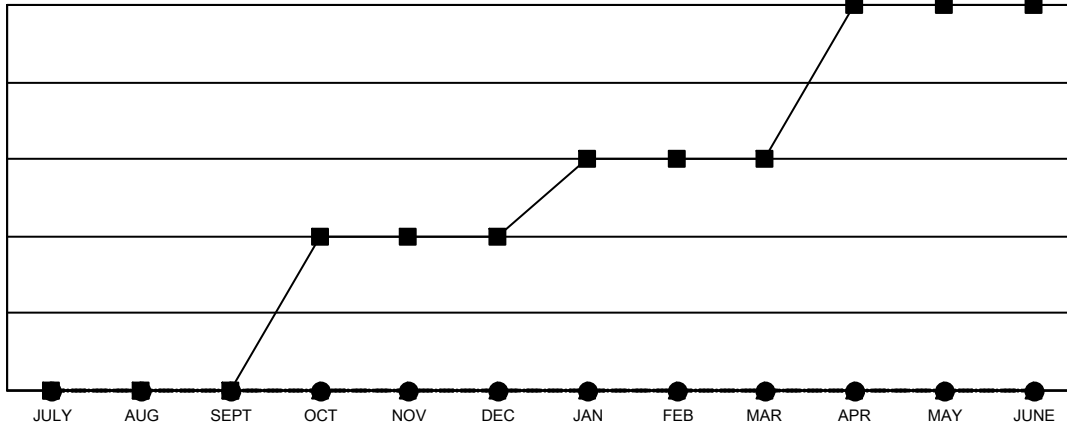
GMT: OPEN

GMT CA 1

Clubs			
RESULTS FOR 2023-2024			
QUARTER	NEW CLUB GOAL	NEW CLUBS	DROPPED CLUBS
JULY/AUG/SEPT	0	0	0
OCT/NOV/DEC	2	0	1
JAN/FEB/MAR	1	0	0
APR/MAY/JUNE	2	0	0

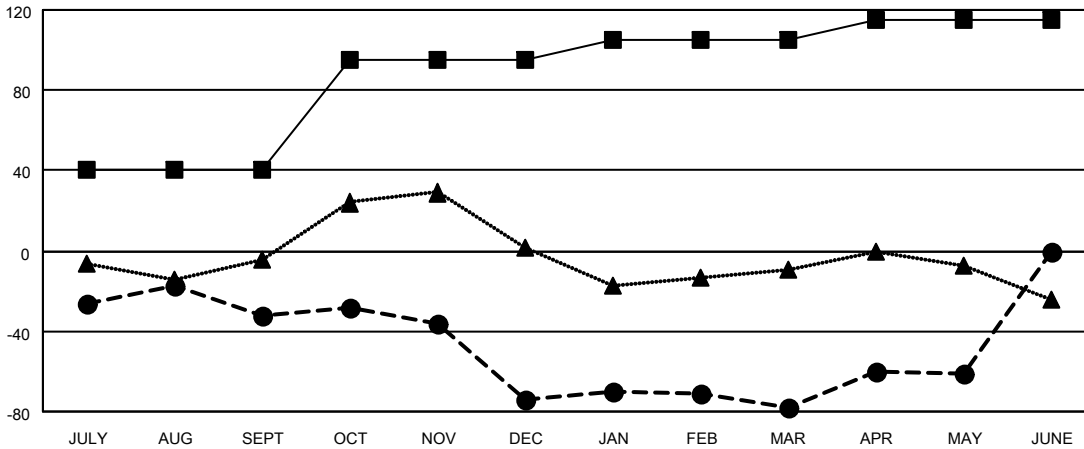
Members			
RESULTS FOR 2023-2024			
QUARTER	MEMBER GROWTH NET GOAL	MEMBER GROWTH ACTUAL	DROPPED MEMBERS ACTUAL (including transfers)
JULY/AUG/SEPT	40	69	87
OCT/NOV/DEC	55	64	101
JAN/FEB/MAR	10	63	60
APR/MAY/JUNE	10	56	33

GOALS AND ACTUAL NEW CLUBS CUMULATIVE



- - CURRENT YEAR GOALS FOR NEW CLUBS
- - CURRENT YEAR ACTUAL NEW CLUBS
- ▲ - LAST YEAR ACTUAL NEW CLUBS

GOALS AND ACTUAL MEMBERS CUMULATIVE



- - MEMBER GROWTH NET GOAL
- - MEMBER GROWTH ACTUAL
- ▲ - LAST YEAR MEMBERSHIP ACTUAL

DROPPED CLUBS: 1	
DROPPED MEMBERS	
DECEASED	45
CLUB CANCELLED	0
OTHER	236
TOTAL	281

61 CLUBS OF 112 ADDED 1 OR MORE NEW MEMBERS

GENDER DISTRIBUTION	
MALE	1,474 (58.82%)
FEMALE	1,032 (41.18%)

[CLICK HERE FOR CUMULATIVE MEMBERSHIP DATA](#)

TOTAL FAMILY UNIT MEMBERS	595
FAMILY MEMBERS PAYING HALF DUES	311